








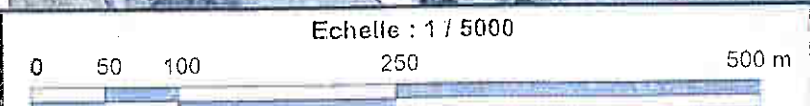


-  Aléa fort
-  Aléa modéré
-  Aléa "Remontée de nappe"
-  Lit mineur
-  Section couverte
-  Limite commune
-  RD 678
-  RD
-  Profil en travers  
(n° profil-cote crue centennale)



**PLAN DE PREVENTION DES RISQUES INONDATION**  
de La VALLIERE  
**CARTE DES ALEAS**

BEYURE-CEREC

Janvier 2007  
**Planche 01**